

REGULAR WEEKEND MASS LOCATIONS

St. Mary's Church, Woodend
1B Elizabeth Street, Woodend 4305.

Immaculate Heart of Mary Church, Leichhardt
22 Old Toowoomba Road, Leichhardt 4305.

St. Joseph's Church, North Ipswich
42 Pine Mountain Road, North Ipswich 4305.

St. Brigid's Church Hall, Rosewood
Railway Street, Rosewood 4340.

Our Lady of the Miraculous Medal, E/Heights
33A Robertson Road, Eastern Heights 4305.



IMPORTANT INFORMATION

Parish Office Hours
Monday to Friday 9:00am - 1:00pm
1C Elizabeth Street, Woodend 4305 | 07 3362 8765
ipswich@bne.catholic.net.au | ipswichcatholic.au

Parish Priest: Fr. Stephen Bliss ofm
Assistant Priest: Fr. Minje Kim
Operations Manager: Benjamin Leschke

The Solemnity of Christ the King

Year B

22 November 2024

Dear Parishioners,

Queen Elizabeth II visited South Korea in April 1999, marking the first time a British Sovereign had made a State Visit to South Korea since diplomatic relations were established between the two countries in 1883. During her four-day trip, Koreans were impressed by her willingness to explore and respect Korean culture. One aspect of her visit that particularly struck Koreans was her willingness to remove her shoes before entering a traditional Korean house in the folk village of Hahoe, despite being advised by the Korean government that it was not necessary. This gesture displayed her respect for the Korean lifestyle and her genuine desire to connect with Korean citizens.

This weekend, we celebrate the Solemnity of Christ the King, acknowledging His sovereignty over all creation. As we reflect on the kingship of the Lord, the words "King," "Lord," and "sovereignty" inevitably evoke a sense of hierarchy. Yes, a kind of hierarchy is placed between Jesus and us as he is truly God. But what we ultimately appreciate this weekend is that Jesus is our King and Lord, not only because He is truly God, but also because He is willing to be close to us at all times as one of us.

As we honour Christ's kingship, we utterly appreciate our Lord's true love and leadership that is not about dominance, but about humility and service. Just as Queen Elizabeth II showed respect for Korean culture by removing her shoes, Jesus shows respect for our humanity by becoming one of us. As we are "CHRISTIANS", people/followers/seekers of Christ, we entirely follow His example, embracing humility and compassion that he shows in our daily lives. As we conclude the Church Year B this weekend, our parish community promise again with the Lord that we continue to serve others with love and kindness, which is the kingly ministry – which we received at our baptism. As we celebrate the Solemnity of Christ the King, may we be inspired to live as citizens of God's kingdom, where love, and service reign supreme. May Christ's power of love transform our hearts and our world. Peace.



Fr. Minje



Mass & Blessing of Graves
St. Michael's Church, Pine Mountain
9am Saturday 30th November

PARISH CALENDAR

NEXT WEEK

Mon 25 9:00am Mass, Parish Centre, Woodend
9:00am Immaculate Heart Church, Leichhardt

Tues 26 3:30pm Junior Choir Practice, Parish Centre
5:00pm Samoan Choir Practice, Parish Centre

8:30am Rosary, 9:00am Mass, 10:00am Adoration, Parish Centre

Wed 27 8:30am Rosary, 9:00am Mass, St. Brigid's, Rosewood
10:00am Prayer Group, St. Clare Room, Parish Office
6:00pm RCIA, Parish Office, Woodend

Thurs 28 9:00am Mass, Parish Centre, Woodend
11:30am Funeral Riemke Kelly, St. Brigid's School Hall

Fri 29 9:00am Mass, Miraculous Medal Church, Eastern Heights

NEXT WEEKEND

Sat 30 9:00am Mass & Blessing of Graves, Pine Mountain
4:30pm Mass, Immaculate Heart Church, Leichhardt
4:30pm Reconciliation, St. Mary's Church, Woodend
5:30pm Mass, St. Mary's Church, Woodend
6:00pm Mass Miraculous Medal Church, Eastern Heights

Sun 31 7:30am Mass, St. Joseph's Church, North Ipswich
8:00am Mass, St. Brigid's Parish Hall, Rosewood
9:00am Mass, Children's Liturgy, St Mary's, Woodend
10:30am Baptisms, St Mary's Church, Woodend
11:30am Baptism Preparation, Parish Centre
5:30pm Mass, St. Mary's Church, Woodend

PARISH PLANNED GIVING

Our new planned giving envelopes are in our churches on the table, and ready for collection. Please collect them as soon as you can.

If you are not currently part of our planned giving program, please participate.

A few dollars a week by many, will make a big difference to the Parish, and help us offer liturgies and pastoral services to the community. Electronic giving is preferred as there are very few administration costs for the Parish. Links below or pick up a form from the welcome desk today. Thanks for supporting us!

Credit Card Form - bit.ly/ipswichcc

Direct Debit Form - bit.ly/ipswichdirect

PARISH PRAYERS



Recently Deceased: Riemke Kelly, Elizabeth Bryant, Sylvia Sweeris Sigrist, Peter Baker, Terence Bennett, Janet Davis, Sr Mary Broadley FMM, Conrad Fernandes.

Anniversaries: John Patrick Maguire, Carolyn Burt and those in our Book of Life.

SACRAMENTS | FORMATION | LITURGY

The BOOK OF LIFE

During the month of November we hold in prayer all who have passed away in our parish in the last year. We also pray for all those who have died; family and friends.



Located in each church is the book, which parishioners may add lists of names of deceased friends and loved ones.

Eternal rest grant unto them, O Lord, and let perpetual light shine upon them. May they rest in peace. Amen. And may the souls of all the faithful departed, through the mercy of God, rest in peace. Amen.

MASS READINGS FOR NEXT SUNDAY



1st Sunday of Advent – Yr C

1st Reading	Jeremiah 33:16-16
Psalm	Psalm 25
2nd Reading	1 Thessalonians 3:12 – 4:2
Gospel	Luke 21:25-28, 34-36

ST. MARY'S CHURCH

Next week, the church will be completely closed due to electrical & lighting work.

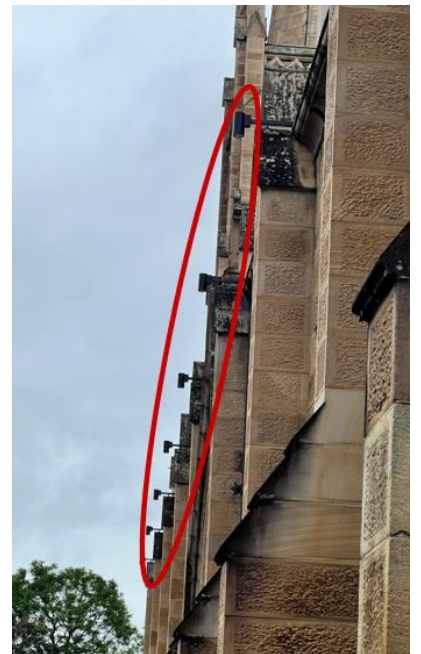
We will celebrate our 9am Monday, Wednesday, and Thursday Mass in the parish centre.



Those with keen eyes may have noticed the new light fittings in the side aisles of the church have been put in place, and we have also secured the new external lighting over the side and rear buttresses.

Next week all the new fittings will be placed in the nave of the church, and several other fittings will be swapped out.

Thank you for your support as we move through the final stage of the electrical upgrade.



BON VOYAGE BERNADETTE LENIHAN

After 46 years working for the church, Bernadette is hanging up her 'parish keys' to spend more time with Pat and the family. Bernadette has been a significant contributor to the operations of our Parish; both St. Brigid's Parish, Rosewood, then the Ipswich Catholic Community, and will be retiring on 29th November. If you would like to make an offering for a gift, please place an envelope in the collection plate with Bernadette's name on in.

ARE YOU INTERESTED IN RESERVING A COLUMBARIUM NICHE?

Did you know that our parish has four cemeteries and a columbarium? We invite you to consider reserving a plot or a niche for your loved ones

We are currently reviewing our columbarium reservations. Many parishioners have expressed interest in reserving a niche, but we have noticed that some reservations lack completed paperwork and payments. To comply with statutory requirements for interment sites, we will be reaching out to parishioners who haven't finalised their reservations. Please be aware that any niches not secured will be made available for others to purchase. We appreciate your understanding and encourage you to complete the reservation process as soon as possible. Thank you for your attention to this matter! For more details, please contact the parish office.



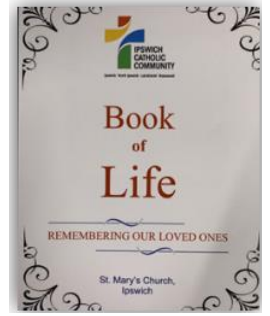
NOVEMBER BLESSINGS AND MASSES

NOVEMBER BLESSINGS AND MASSES - Mass will be offered each day in November for those whose names have been written in the Book of Life. The BOOK OF LIFE in each church is on display for those wishing to enter the names of your deceased loved ones.

We also have special "**November Mass Envelopes**" for parishioners and visitors to use. Please print the names of your deceased family members and friends clearly and place them in the collection plate. Envelopes available in all churches.

Upcoming Cemetery & Church Liturgy dates in November:

- Saturday 30th, 9am Mass, Blessing and Morning Tea, St. Michael's Cemetery, Pine Mountain



What happens to Mass Offering and November Envelopes?

Each week in November we receive intentions from parishioners asking our priests to remember their deceased loved ones. Our priests offer Mass (and pray) for anyone who is listed on an envelope.

At daily Mass, our priests continue to pray for those who have passed away, and for anyone our parishioners asks to be remembered; those names placed on envelopes, and all the names listed in our Book of Life.

Remembering those who have died is an important part of our faith, and we are blessed to have priests who can offer daily Mass and remember them in their prayers daily. Thanks to Fr. Stephen and Fr. Minje!



YOUTH & FAMILY NEWS

ST. MARY'S NATIVITY

Please note that there is a change in the start date of practices – we will now begin practicing on the 3rd of December



This year the children of our parish community will be telling the Nativity Story at the St Mary's Church Christmas Eve Vigil Mass. Practices will be on every Tuesday afternoon from the 3rd of December to the 17th of December. Practices will last an hour commencing at 3:30pm in St Mary's Church Ipswich. All primary school aged children who are in prep to grade 6 in 2024 are welcome to and encouraged to be part of this beautiful story. We are also seeking a few volunteers, if you are wishing to assist in the preparation and practice for the Nativity Story, please email englands@bne.catholic.net.au to express your willingness. We would love to have a lot of young people involved!

Last Friday we finished up the usual Friday Night Youth's for the year! One word I would use to describe the night was peaceful. I could see the youth felt refreshed, they felt relieved the school year is almost over, and they just wanted to have fun and enjoy the company of others. This year we have been able to help grow the faith of our young people with weekly talks and prayer experiences/opportunities.

On Friday the young people wrote on dissolvable paper something that they are uncertain and worried about and placed it in the water so it would wash away. There are many moments in our lives when Jesus washes away our worries, washes away our sins and fills us with love, strength and joy. As we venture into 2025, I encourage everyone to trust their uncertainties and worries to Jesus, because He will help you overcome them and stay with you always.

This Sunday, 24th of November, isn't just Feast of Christ the King, it is also the Annual World Youth Day. I ask that through prayer this weekend you pray for all young people around the world, that they themselves have a desire and want to have Jesus as part of their life, and that there will always be people to support, guide and encourage young people to have a relationship with Jesus.

CONNECT YOUTH END of YEAR RETREAT - This Sunday the 24th of November Connect High Youth will be having an End of Year Retreat from 2:30pm to 6:30pm! All young people who are in Year 6 to Year 12 in 2024 are more than welcome to join us! Afternoon tea, dinner and drinks are provided along with a water fight, games, prayer experience, awesome times and so many more fun things!

This will be the last chance to engage in a Connect Youth gathering so come along and finish your school year on a high! Any questions please email englands@bne.catholic.net.au

Stewart England, Youth Coordinator

NEWS & UPDATES

PARISH HOSPITALITY - The 1st Sunday of Advent, following the 5:30pm Saturday evening Mass, there will be a tea/coffee/hospitality in the Parish Centre. Please come along, especially if you haven't seen inside the new Parish Centre. We are always looking for parishioners who are willing to join a roster (once a month) to have a cuppa after one or more of the Masses at St Mary's, so please reach out. With a fully operational kitchen, the work involved is light! If you're interested, please contact the Parish Office to express your interest.

2025 FRANCISCAN CALENDAR

Available now at all churches for \$5 each



MINISTRY ROSTERS

Now published, check your login for your rostered ministries for December to February
We are drafting the Christmas Rosters next week

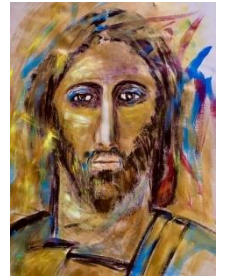
ANNUALS are available for purchase via the link below. Daily Mass Book (\$26), Ordo (16.50), Break Open the Word (\$26) can be purchased using the following link - <https://shop.liturgybrisbane.net.au/collections/annuals>

Celebrating Feast of Christ the King – Sunday, 24th November:

O Lord our God, You alone are the Most Holy King and Ruler of all nations. We pray to You, Lord, in the great expectation of receiving from You, O Divine King, mercy, peace, justice and all good things.

Protect, O Lord our King, our families and the land of our birth. Guard us we pray Most Faithful One.

Protect us from our enemies and from Your Just Judgment. Forgive us, O Sovereign King, our sins against you. Jesus, You are a King of Mercy. We have deserved Your Just Judgment Have mercy on us, Lord, and forgive us. We trust in Your Great Mercy. O most awe-inspiring King, we bow before You and pray; May Your Reign, Your Kingdom, be recognized on earth. Amen.



RCIA – (Rite of Christian Initiation for Adults). This Sunday, 24th November at St Mary's Church during 9.00am Mass, our four Catechumens and two Candidates will receive the **Rite of Welcome and Acceptance** into the Ipswich Catholic Community. This is a special time for our community to show them our love and support. Please continue to pray for them as they are on this journey of faith, searching for God and its kingdom. Through weekly sessions, our participants gain a deeper appreciation and understanding of the Catholic beliefs and practices. Our next session is on **Wednesday, 27th November at 6.00pm** in the Parish Office.



St. Joseph's Church Organ Appeal - St. Joseph's Church is seeking a replacement for its aging organ, which has seen better days. We would greatly appreciate any support in the following ways: monetary donations toward purchasing a new organ, assistance with fundraising efforts, and donations of items for raffles or other fundraising events. If you are able to help or have suggestions for sourcing a suitable replacement organ, please contact the Parish office at 3362 8765, or Roly and Tarana Cruice at 3281 4783 or 0400 149 063.

ADVENT & CHRISTMAS



THIS YEAR'S GIVING TREE

- Parish Ministry
- St. Vincent de Paul
- Ipswich Hospice

Envelopes will be available in churches from 30th November. We also have a QR Code for those who want to give electronically. Don't forget to list/mark your selection.



Each year we raise around \$6,000 and the money is always put to good use. Thank you in advance!

You may also want to use the Vinnies baskets at church a little differently this year: a toy for a child, some Christmas themed gifts (fruit cake, bon bons, etc). Use your imagination!



ADVENT CHURCH ENVIRONMENT

1st Sunday	Placement of Advent Wreath & Candles
2nd Sunday	Placement of Crib & Giving Tree
3rd Sunday	Christmas Tree Assembled
4th Sunday	Blessing of Crib & Christmas Tree

SECOND RITE OF RECONCILIATION

Monday 16th Dec 7pm

CHRISTMAS MASSES & LITURGIES

Christmas Vigil (Eve) – Tuesday 24th December

4:30pm – Immaculate Heart, Leichhardt

4:30pm – St. Brigid's, Rosewood

6:00pm – St. Mary's, Woodend

6:00pm – St. Joseph's, North Ipswich

Midnight Mass – St. Mary's, Woodend

Christmas Day – Wednesday 25th December

7:30am – Miraculous Medal, Eastern Heights

9:00am – St. Mary's, Woodend

No evening Mass Christmas Day

